

Centre No.						Paper Reference	Surname	Initial(s)
Candidate No.						6 6 6 4 / 0 1	Signature	

Paper Reference(s)

**6664/01**

**Edexcel GCE  
Core Mathematics C2  
Advanced Subsidiary**

Wednesday 10 January 2007 – Afternoon

Time: 1 hour 30 minutes

Materials required for examination

Mathematical Formulae (Green)

Items included with question papers

Nil

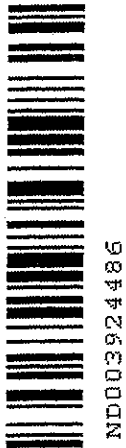
Candidates may use any calculator EXCEPT those with the facility for symbolic algebra, differentiation and/or integration. Thus candidates may NOT use calculators such as the Texas Instruments TI 89, TI 92, Casio CFX 9970G, Hewlett Packard HP 48G.

Examiner's use only

--	--	--

Team Leader's use only

--	--	--



Question Number	Leave Blank
1	
2	
3	
4	
5	
6	
7	
8	
9	
10	
Total	

**Instructions to Candidates**

In the boxes above, write your centre number, candidate number, your surname, initial(s) and signature.

Check that you have the correct question paper.

You must write your answer for each question in the space following the question.

When a calculator is used, the answer should be given to an appropriate degree of accuracy.

**Information for Candidates**

A booklet 'Mathematical Formulae and Statistical Tables' is provided.

Full marks may be obtained for answers to ALL questions.

The marks for individual questions and the parts of questions are shown in round brackets: e.g. (2).

There are 10 questions in this question paper. The total mark for this paper is 75.

There are 24 pages in this question paper. Any blank pages are indicated.

**Advice to Candidates**

You must ensure that your answers to parts of questions are clearly labelled.

You must show sufficient working to make your methods clear to the Examiner. Answers without working may gain no credit.

*Turn over*

This publication may be reproduced only in accordance with Edexcel Limited copyright policy. ©2007 Edexcel Limited.

Printer's Log. No.  
**N24322A**

W850/R6664/57570 4/4/3/3/3/21,400



**edexcel**   
advancing learning, changing lives







Leave  
blank

### Question 2 continued

Q2

(Total 6 marks)

5

Turn over



3. The line joining the points  $(-1, 4)$  and  $(3, 6)$  is a diameter of the circle  $C$ .

Find an equation for  $C$ .

(6)

---

---

---

---

---

---

---

---

---

---

---

---

---

---

---

---

---

---

---

---

---

---

---

---

---

---

---

---

---

---

Q3

(Total 6 marks)



4. Solve the equation

$$5^x = 17,$$

giving your answer to 3 significant figures.

(3)

---

---

---

---

---

---

---

---

---

---

---

---

---

---

---

---

---

---

---

---

---

---

---

---

---

---

---

---

---

---

Q4

(Total 3 marks)



5.

$$f(x) = x^3 + 4x^2 + x - 6.$$

(a) Use the factor theorem to show that  $(x + 2)$  is a factor of  $f(x)$ . (2)

(b) Factorise  $f(x)$  completely. (4)

(c) Write down all the solutions to the equation

$$x^3 + 4x^2 + x - 6 = 0. \quad (1)$$

-----

-----

-----

-----

-----

-----

-----

-----

-----

-----

-----

-----

-----

-----

-----

-----

-----

-----

-----

-----

-----

-----

-----

-----

-----

-----











7.

Figure 1

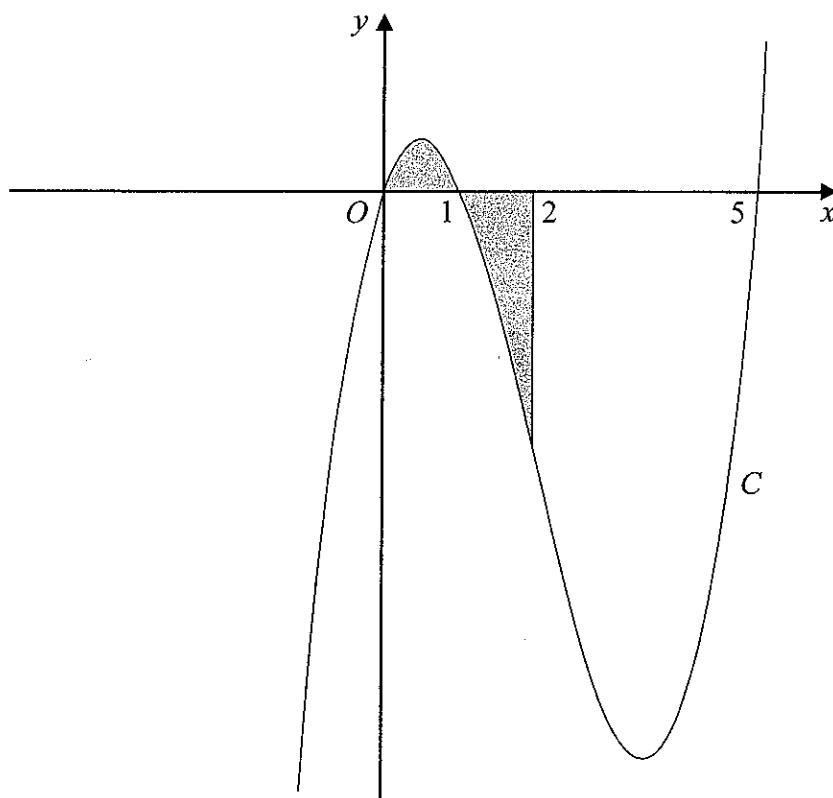


Figure 1 shows a sketch of part of the curve  $C$  with equation

$$y = x(x - 1)(x - 5).$$

Use calculus to find the total area of the finite region, shown shaded in Figure 1, that is between  $x = 0$  and  $x = 2$  and is bounded by  $C$ , the  $x$ -axis and the line  $x = 2$ .

(9)

---

---

---

---

---

---

---

---

---

---

---

---

---

---

---

---

---

---

---

---

---

---

---

---







Leave blank

Question 7 continued

Lined writing area for the answer to Question 7.

Q7

(Total 9 marks)





8. A diesel lorry is driven from Birmingham to Bury at a steady speed of  $v$  kilometres per hour. The total cost of the journey, £ $C$ , is given by

$$C = \frac{1400}{v} + \frac{2v}{7}$$

(a) Find the value of  $v$  for which  $C$  is a minimum. (5)

(b) Find  $\frac{d^2C}{dv^2}$  and hence verify that  $C$  is a minimum for this value of  $v$ . (2)

(c) Calculate the minimum total cost of the journey. (2)

Lined area for student answers, consisting of approximately 20 horizontal lines.





Leave blank

**Question 8 continued**

Lined writing area for the answer to Question 8.

Q8

(Total 9 marks)



9.

Figure 2

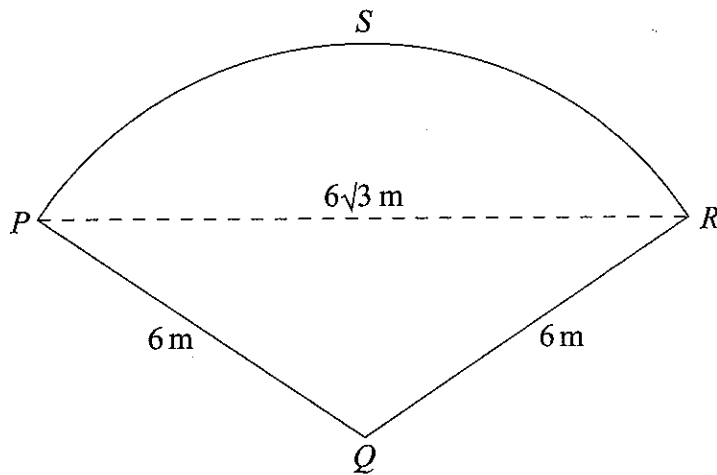


Figure 2 shows a plan of a patio. The patio  $PQRS$  is in the shape of a sector of a circle with centre  $Q$  and radius 6 m.

Given that the length of the straight line  $PR$  is  $6\sqrt{3}$  m,

- (a) find the exact size of angle  $PQR$  in radians. (3)
- (b) Show that the area of the patio  $PQRS$  is  $12\pi$  m<sup>2</sup>. (2)
- (c) Find the exact area of the triangle  $PQR$ . (2)
- (d) Find, in m<sup>2</sup> to 1 decimal place, the area of the segment  $PRS$ . (2)
- (e) Find, in m to 1 decimal place, the perimeter of the patio  $PQRS$ . (2)

---

---

---

---

---

---

---

---

---

---







0

Leave  
blank

**Question 9 continued**

Lined area for writing the answer to Question 9.

**Q9**

**(Total 11 marks)**



10. A geometric series is  $a + ar + ar^2 + \dots$

(a) Prove that the sum of the first  $n$  terms of this series is given by

$$S_n = \frac{a(1-r^n)}{1-r} \tag{4}$$

(b) Find

$$\sum_{k=1}^{10} 100(2^k) \tag{3}$$

(c) Find the sum to infinity of the geometric series

$$\frac{5}{6} + \frac{5}{18} + \frac{5}{54} + \dots \tag{3}$$

(d) State the condition for an infinite geometric series with common ratio  $r$  to be convergent.

(1)

---

---

---

---

---

---

---

---

---

---

---

---

---

---

---

---

---

---

---

---

---

---

---

---

---

---

---

---

---

---



**Question 10 continued**

---

---

---

---

---

---

---

---

---

---

---

---

---

---

---

---

---

---

---

---

---

---

---

---

---

---

---

---

---

---





Leave blank

**Question 10 continued**

Ruled area for writing the answer to Question 10.

**(Total 11 marks)**

**Q10**

**TOTAL FOR PAPER: 75 MARKS**

**END**



N 2 4 3 2 2 A 0 2 4 2 4